

கார்டசாகடத லார்தால
செயலாற்றல் அறிக்கை
Performance Report

2016



கடூர஠ தல டதீலாத, டப்தர சதசுகதீ தா சூதா கஸலீர்தத அலாதஸ஠஠டச
மலாநா஠்டு புதய கிராமங்கள், ஁ட்கட்டமைப்பு மற்றும் சமூக அபிவிருத்தி அமைச்சு
Ministry of Hill Country New Villages, Infrastructure and Community Development



காரீசபாபதன வாரீகாவ
செயலாற்றல் அறிக்கை
Performance Report

2016

கடூரப நவ ஂமீலாத, ஁பீதல பத஁கமீ தா பூதா ஁வீர்பதன துலாநா஁஁ச
மலைநா஁஁டு புதிய கிராமங்கள், ஁ட்கட்டமைப்பு மற்றும் சமூக அபிவிருத்தி அமைச்சு
Ministry of Hill Country New Villages, Infrastructure and Community Development



Ministry of Hill Country New Villages, Infrastructure and Community Development

Performance 2016

කාර්යසාධන වාර්තාව - 2016
செயலாற்றல் அறிக்கை - 2016
Performance Report - 2016

කඳුරට නව ගම්මාන, යටිතල පහසුකම් හා ප්‍රජා සංවර්ධන අමාත්‍යාංශය
மலைநாட்டு புதிய கிராமங்கள், உட்கட்டமைப்பு மற்றும் சமூக அபிவிருத்தி அமைச்சு
Ministry of Hill Country New Villages, Infrastructure and Community Development

P.O. Box 562, No. 45, St. Michale's Road, Colombo 03.
Tel: 0112 541 369 Fax : 0112 328 117
Email : smpid@sltnet.lk / mhplanning2016@gmail.com
Web site www.mpid.gov.lk



Vision

Transform plantation community into a village community with dignity, self – respect and social status to be on par with other communities

Mission

Promote the well-being of the plantation community by improving the habitat, living condition and socio economic facilities

Content

	Page
1. Introduction	8-9
Establishment of the Ministry	10
3. The Main Functions	10
4. Organizational Structure and Cadre	11-12
5. Development approach and Priorities	13
5.1 Development Approach	13
5.2 Priorities of the Ministry	13-14
6. Mechanism for Implementation of Development Projects / Organizational Structure	15
6.1 Implementation Mechanism	15
6.2 Organizational Structure	16
7. Expenditure Summary	17
8. Development Programs and Progress	18
8.1 Five Year National Plan of Action for Social and Economic Development of the Plantation community (2016-2020)	18-23
8.2 Houses for Hill Country New Villages	24-33
8.3 Lagging Area Socio-Economic Development	33-40
8.4 Livelihood Development Programme	41-44
9. Special achievements of the Ministry in 2016	45-46
10. Institutions under the Ministry	47
10.1 Plantation Human Development Trust	47-52
10.2 Institutions under the preview of the Saumyamoorthi Saumyamoorthi Thondaman Memorial Foundation	53-56
10.2.1. Thondaman Vocational Training Centre – Hatton	
10.2.2. Prajasakthi (E-Kiosk) Centres	
10.2.3. Cultural Centre - Ramboda	
10.2.4. Sports Complex - Norwood	





The Ministry of Hill Country New Villages, Infrastructure and Community Development was established by an Extra - ordinary gazette No 1933/13 published on 25.09.2015 by the new government with a new intention and approach to transform the plantation community comprises over one million population contributing a larger share to the national income, by removing the social disparities they face, into a village community with dignity, self respect and social status, to be on par with other communities.

" Transformation and empowerment of this community cannot be completed within a short span of time. It is a continuous process. The programmes and projects implemented hither to and to be implemented in the future by this Ministry would strengthen this process and lead to the elimination of the lower social status ascribed to this Community."



1. Introduction

Origin of the Plantation Community extends to British colonial era being in history of Sri Lanka for nearly two centuries. In 1840, British brought them as labourers from South India for the Coffee cultivation in hilly areas. Aftermath of decline in Coffee plantation, they were centered around tea and rubber plantations and evolved as a unique, solitary community.

As resident labourers occupied in row line rooms with low level of income and high poverty, they experience a distinct social disparity compare to the other communities.

Statistics which reflect the Social Development status of the Estate Community

Indicators - Poverty and Human Settlement	National	Urban	Rural	Estate
Poverty Head count Index (HIES 2013)	6.7	2.1	7.6	10.9
Access to safe drinking water % (HIES 2013)	89.7	98.9	90.9	52.4
Semi permanent houses % (HIES 2013)	17.8	7.4	16.9	76.1
Literacy rate % (HIES 2013)	95.7			86.1
Families with access to improved sanitation % (HIES 2012/2013)	87.2			73.3
Early Childcare Centers established, satisfying National Physical Standards%	50.7			24 - (All estates) 64 - (RPC Estates)

Statistics which reflect the Social Development status of the Estate Community

Indicators - Health & Nutrition	National	Urban	Rural	Estate
Neonatal mortality rate (per 1000 births)	11	6.0	15.0	18.0
Infant mortality rate (per 1000 births)	9.7	10.0	19.0	29.0
Prevalence of anemia in children < 5 years and women of reproductive age	20% (UNICEF 2012)			61% (UNICEF 2012)
Proportion of Stunted Growth Children under 5 years	18	13.8	16.2	40.2
Proportion of underweight Children under 5 years	21.8	16.5	21.2	30.1
Low Birth weight (less than 2.5 Kg)	16.6	12.8	16.4	31.0
Wasted (low weight for height) Children under 5 years	14.7			16.4

Source: DHS 2006/07, HIES 2012/13



2. Establishment of the Ministry

The Ministry of Hill Country New Villages, Infrastructure and Community Development was established by an Extra - ordinary gazette No 1933/13 published on 25.09.2015 by the new government with a new intention and approach to transform the plantation community comprises over one million population contributing a larger share to the national income, by removing the social disparities they face, into a village community with dignity, self respect and social status, to be on par with other communities.

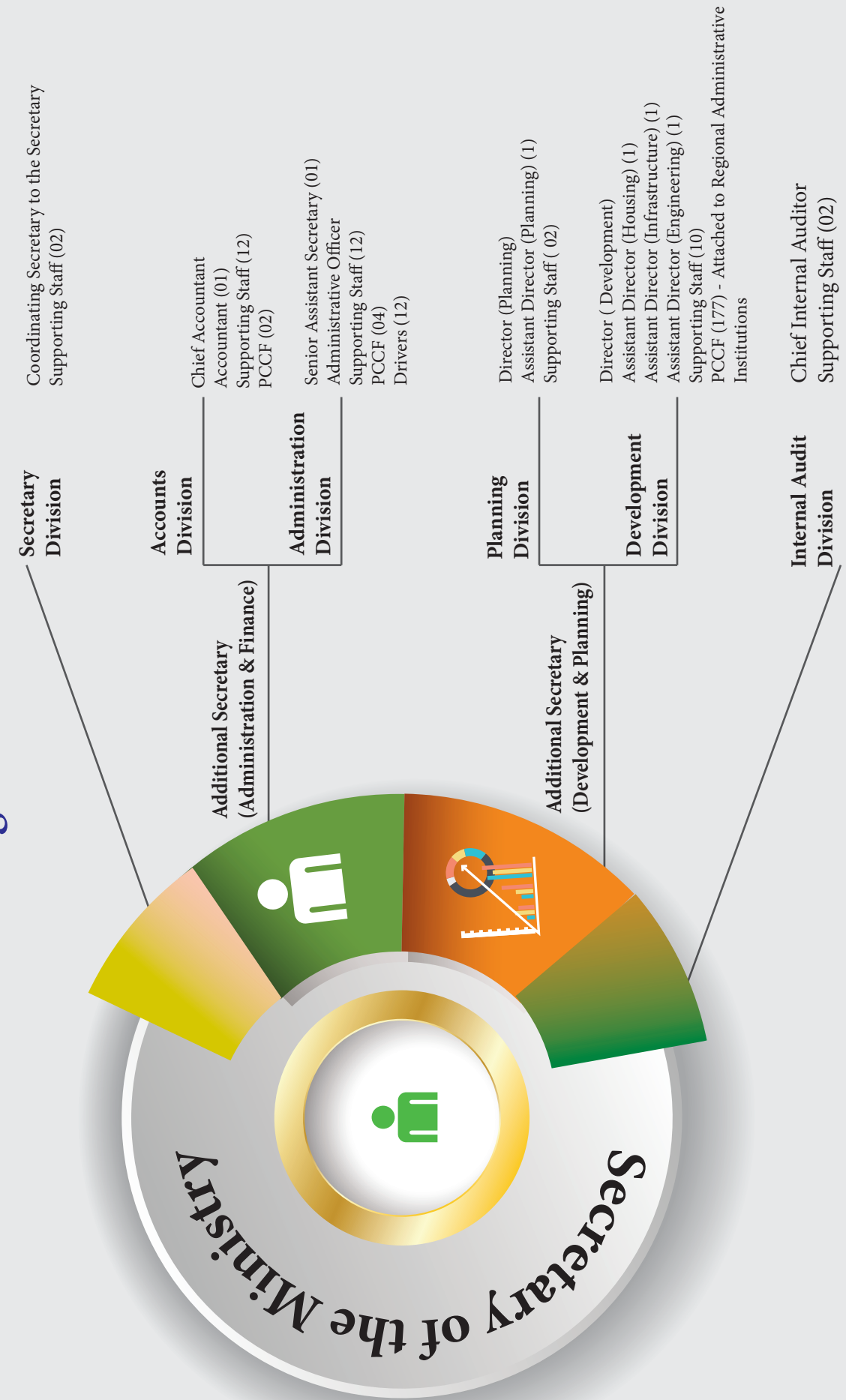
3. Main Functions

- 3.1. Establishment of new villages / townships, providing houses and infrastructure facilities for the betterment of the landless people who occupied in row line rooms and working at state and private plantation companies.
- 3.2. Implementation of projects which enhance livelihood and employment opportunities to empower the estate plantation communities.
- 3.3. Providing basic facilities and other requirements to uplift the estate community economically, socially and culturally.
- 3.4. Development of Infrastructure facilities in the rural plantation sector.



4. Organizational Structure and Cadre

4.1 Organizational Structure



**Approved and Existing Cadre Information of the
Ministry - as at 31.12.2016**

Serial No	Designation	Service	Approved	Existing Cadre
1.	Secretary		1	1
2.	Additional Secretary	Sri Lanka Administrative Service	2	2
3.	Senior Assistant Secretary	Sri Lanka Administrative Service	1	1
4.	Director	Sri Lanka Administrative Service	1	1
5.	Director	Sri Lanka Planning Service	1	1
6.	Director	Sri Lanka Engineering Service	1	0
7.	Chief Accountant	Sri Lanka Accountancy Service	1	1
8.	Chief Internal Auditor	Sri Lanka Accountancy Service	1	1
9.	Assistant/Deputy Director	Sri Lanka Administrative Service	2	1
10.	Assistant/Deputy Director	Sri Lanka Planning Service	2	2
11.	Assistant/Deputy Director	Sri Lanka Engineering Service	1	1
12.	Accountant	Sri Lanka Accountancy Service	1	1
13.	Assistant Secretary	Sri Lanka Administrative Service	1	0
14.	Administrative Officer	Management Services	1	1
15.	Translator	Translator Service	2	0
16.	Technical Officer	Sri Lanka Technical Service	3	0
17.	Information and Communication Technology Assistant	Information and Communication Technology Service	1	0
18.	Coordinating Secretary to Secretary	Temporary	1	1
19.	Statistical officer		1	0
20.	Development Officer	Development Officers Service	14	14
21.	Public Management Assistant	Management Services	20	12
22.	Plantation Community Communication Facilitator	Close Service	255	183
23.	Photographer	Temporary	1	1
24.	Assistant Photographer	Temporary	1	1
25.	Vedio Graphor	Temporary	1	1
26.	Driver	Combine Divers Service	12	12
27.	Office Assistant	Office Assistant Service	13	7
	Total		342	246

5. Development Approach and Priorities

5.1 Development Approach

The Ministry of Hill Country New Villages, Infrastructure and Community Development with the involvement of other relevant stakeholders, has formulated a 05-year National Plan of Action (NPA) (2016 – 2020) on Social & Economic Development of the Plantation Community which comprises of 250,000 families (over 1 million population) in some areas of Central, Uva, Sabaragamuwa, Western, North Western and Southern provinces and obtained the approval of the Cabinet of Ministers for its implementation.

The Ministry has entered into a new development approach by giving fullest publicity to the NPA. The steps have been taken to strengthen the social and economic development of the plantation community by obtaining the fullest involvement of the other line Ministries, Provincial Ministries and all the other institutions which represent the priority areas of the NPA for implementation. For this purpose, the supervision, coordination and monitoring of relevant stakeholders are also been carried out by the Ministry.

5.2 Priorities

The priorities of the Ministry include, the construction of houses for the plantation community, provision of other Infrastructure facilities for socio economic development and upliftment of the livelihood of plantation community.





PRIORITIES OF THE MINISTRY

6. Mechanism for Implementation of Development Projects / Organizational Structure

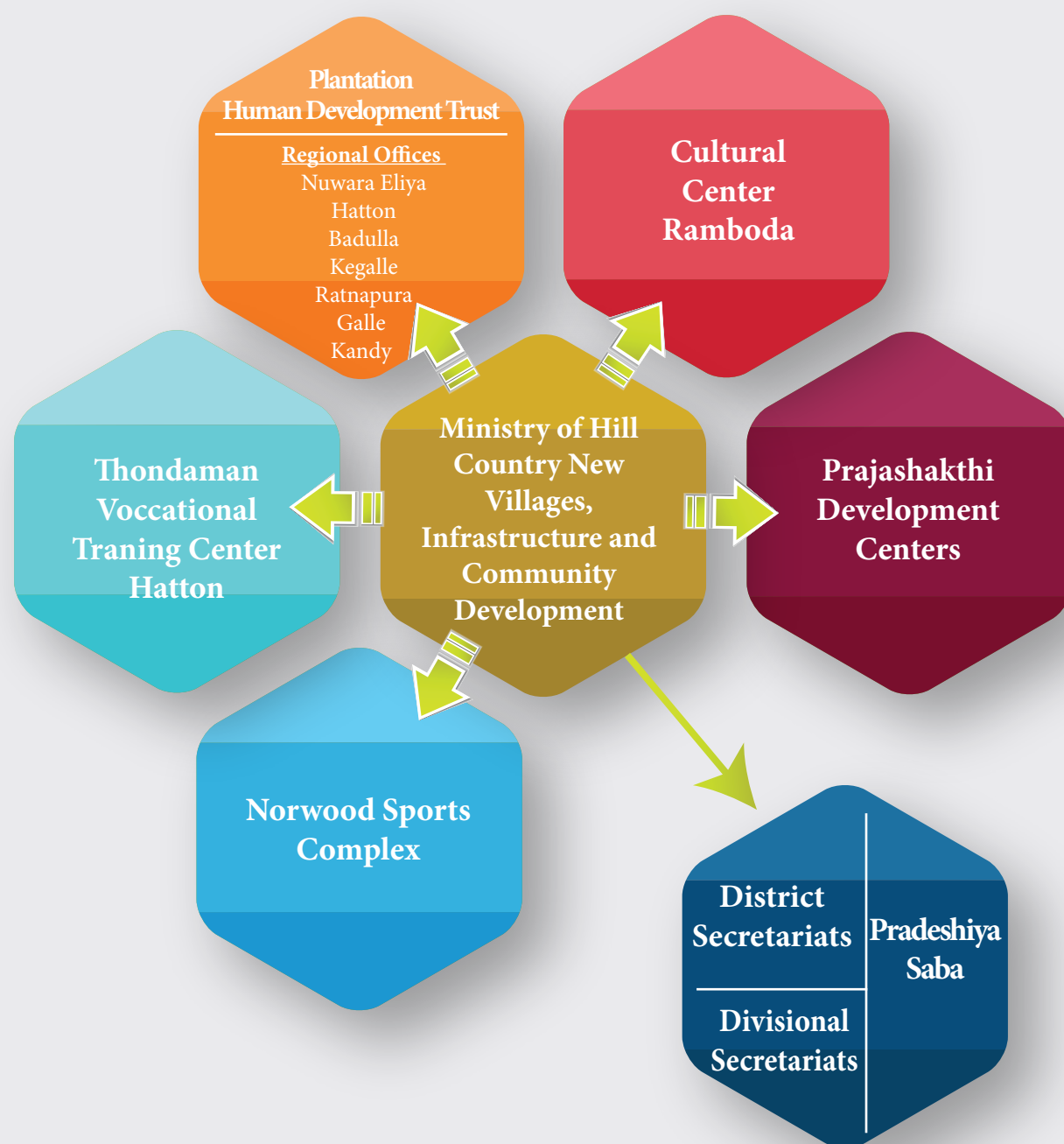
6.1 Implementation Mechanism

Development Projects of the Ministry are mainly implemented by the Plantation Human Development Trust (PHDT), Thondaman Vocational Training Centre, Prajasakthi Centers, District / Divisional Secretariats and Pradeshya Sabhas.

Organizational Structure for Implementation of Development Projects

Priority Sector	Implementing Agencies
(1) Housing for Hill Country New Villages	
(i) Green Gold Housing	Plantation Human Development Trust
(ii) Indian Housing Programme	UN HABITAT, Red Cross Organization, National Housing Development Authority, Habitat for Humanity
(2) Socio Economic Development in lagging areas	
(I) Re Roofing of Line rooms	Plantation Human Development Trust
(II) Supply of Drinking water	Plantation Human Development Trust, Divisional Secretariats and Pradeshiya Sabhas
(III) Sanitation Improvement (Construction of Latrines)	
(IV) Child Development Centers including other Infrastructure facilities development (Access Roads / Electricity etc.)	
3. Livelihood Development	
(1) Skills Development and Vocational Training	Thondaman Vocational Training Centre, Prajasakthi Project
(II) Community Empowerment	Through Plantation Community Communication Facilitators who are attached to the Divisional Secretariats / District Secretariats/PHDT, PrajaShakthi Project and Revolving Fund
(III) Health and Nutrition	

6.2 Organizational Structure



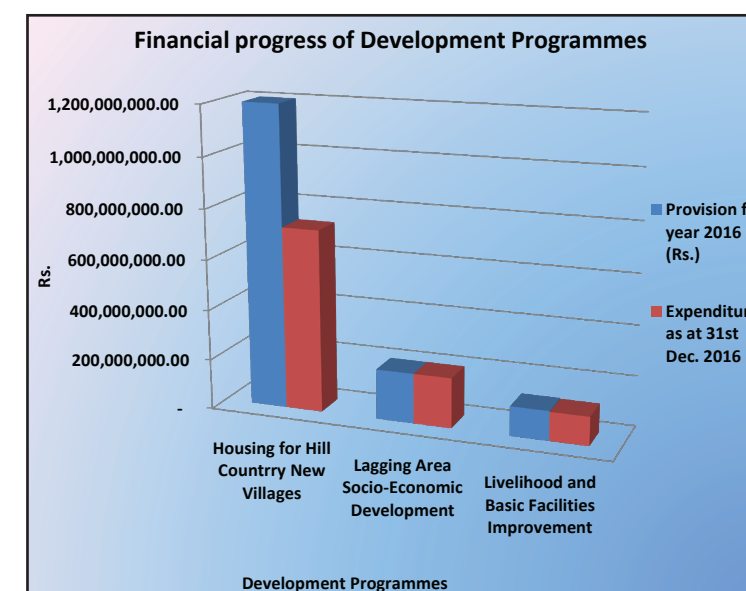
7. Expenditure Summary

(01.01.2016 - 31.12.2016)

Expenditure Summary of the Ministry

Category/Programme/Project	Provision for 2016 (Rs. 000 ['])	Expenditure incurred as at 31.12.2016 (Rs. 000 ['])	Expenditure as a Percentage %
Recurrent	223,421	189,124	84.65
Personal emoluments	153,850	126,796	82.42
General Administration	69,571	62,328	89.59
Capital	1,573,580	1,094,971	69.58
General Administration	55,580	53,572	96.39
** Development Programs	1,518,000	1,041,399	68.6
a. Housing for Hill country New Villages	1,200,000	726,429	61
b. Lagging Area Socio Economic Development	200,000	199,997	100
c. Livelihood and Basic Facilities Improvement	118,000	114,973	97
TOTAL	1,797,001	1,284,095	71.46

Financial Progress of the Development Programmes



8. Development Programs and Progress

8.1 Five Year National Plan of Action (NPA) for Socio - Economic Development of the Plantation Community (2016 - 2020)

The primary objective of this five year National Plan of Action (NPA) is to obtain fullest contribution of all the relevant stakeholders to implement this plan to upgrade socio - economic conditions of the plantation community, paying special attention to the development of basic infrastructure facilities and good governance which are decisively connected to poverty of the plantation community. Further the plan pays attention to solve the problems relating to the areas such as health and nutrition, educations and early childhood development, skills development and vocational training, youth and women empowerment, housing, drinking water and sanitation.

The Ministry involves in coordination, monitoring and evaluation of all the programmes /projects implemented by stakeholders who are responsible for the implementation of this NPA. The monitoring of quarterly progress is being carried out by the Department of Project Management and Monitoring. Similarly the responsibilities of conducting awareness programmes on the NPA, obtaining suitable project proposals, mobilization of local and foreign funds required to implement these proposals are also come under the Ministry.



8.1.1 Progress of the implementation of National Plan of Action (NPA)

- A. Preparation of NPA and Launching of the printed National Plan of Action was held on 10/03/2016 at the Bandaranayake Memorial International Conference hall. Hon. Prime Minister was graced the occasion as chief guest and launched the NPA with the participation of local and foreign representatives.
- B. Printing of the NPA in three Languages and distribution among relevant parties and taking action to publish it in the website of the Ministry.
- C. Preparation of a Mechanism to implement NPA, intervening when necessary to solve problems, and hold discussions with experts, Ministry officials and Public representatives to obtain their supports for the proposals / projects for implementation. (Think Tank – Meetings)
- D. Obtaining project proposals for implementation of the NPA, allocation of budgetary provisions and conducting regional workshops to make awareness of the NPA among line Ministries, Provincial Ministries and head of other institutions.
- E. As a result of the workshops conducted, submitted proposals from relevant line ministries to implement selected activities of the National Plan of Action.
- F. Conducted three work shops in Sinhala and Tamil mediums, to the Plantation Community Communication Facilitators (PCCF) those who attached to the Divisional Secretariats to obtain their contribution for implementation of the NPA.




BOOK LAUNCH
 ORGANIZED BY
**MINISTRY OF HILL COUNTRY
 NEW VILLAGES**
 AT
COMMITTEE ROOM "B"
 (From 0900 hrs to 1300 hrs)



Launching of National Plan of Action (NPA) -10.03.2016



Awareness program Conducted for the PCCFs on Implementation of the Nationl Plan of Action 27.09.2016



Discussion with USA Embssidor on NPA

Documentry Film Produced by the Ministry on NPA



A project has been implemented by this Ministry in 2015, for the plantation community, to provide individual houses in 7 perch land with 550 square feet floor area consists of drinking water and sanitation facilities and is being implemented with the intention of providing right to live with dignity with the same pride like other communities in the country.



8.2 Housing for Hill Country New Villages

When considering the indexes of housing and shelters, plantation community can be considered as the most lagging behind community in the country. More than 58% of plantation community lives in line rooms. (The National level average is 3.8%). Floor area of a Line room is about 200 square feet and built in rows attached to one another. About 172,700 families are living in these line rooms in the plantation areas. This situation has created many problems such as lack of proper ventilation, congestion, lack of privacy in addition to many social problems such as being victims of abuse, insecurity and lack of social recognition etc.

Based on a policy decision taken by the government, a project has been implemented by this Ministry in 2015 for the plantation community, to provide individual houses in 7 perch land with 550 square feet floor area consists of drinking water and sanitation facilities, with the intention of providing right to live with dignity with the same pride like other communities in the country. This project is being implemented based on the Five Year NPA. By end of 2020, the Ministry expects to provide 50,000 houses to the plantation community.

Based on this policy, two Housing Schemes are being implemented by the Ministry using Government funds and full grant from Government of India.

8.2.1. Green Gold Housing Scheme Village / Township Concept

Under the “Green Gold” housing scheme commenced using government funds in 2016, the approval has been granted to construct 1,401 houses by the end of this year. The houses are at different stages of construction in 7 plantation areas namely Nuwara Eliya, Hatton, Kegalle, Badulla, Rathnapura, Kandy and Galle. The unit cost of construction is Rs.650, 000 and 47% will be given grant and 53% loan to be recovered at 7.5% interest over a period of 15 years from the payroll of the workers. Those who lost their houses due to landslide will be given full grant houses. By the end of 2016, completed and handed over 493 houses to the beneficiaries and works of the remaining are at different stages of construction. In parallel to this, 513 water projects have been completed and total allocation was Rs. 27 Mn.



Housing Project implemented by Hatton Regional office, at Bambarakele Estate, Bambarakele Division in Horana Plantation Company
Beneficiaries - 20 Families, Total Cost - Rs. 13 Mn.

Physical Progress of Green Gold Housing (as at 31st December 2016)

Physical Progress	Housing Units	Number of Projects (PHDT)						
		Nuwara Eliya	Hatton	Rathnapura	Galle	Kegalle	Badulla	Kandy
Completed	493	189	77	71	102	-	6	48
Under Construction	937	254	254	80	47	113	138	51
Total	1430	443	331	151	149	113	144	99

Water Projects implemented under Green Gold Housing - Regional Level

Approved Water Projects	Progress at Regional Level							Total allocation Rs. Mn.	Total Cost Rs. Mn.
	Nuwara Eliya	Hatton	Kandy	Badulla	Rathnapura	Kegalle	Galle		
513	179	25	26	91	113	6	73	27.06	23.64



Housing Project implemented by Hatton Regional office, at Crystelas Farm Estate, Crystelas Division in Kotagala Plantation Company
Beneficiaries - 20 Families, Estimated Cost - Rs. 20 Mn.

Physical Progress of the Construction of Green Gold Housing

S/N	PHDT Region	RPC	Estate	Division	No. of Units	No. of units Completed (31.12.2016)
01	Galle	Namunukula	Hulandawa	Main/Buluwana	25	
		Wattawala	Homadola	No.06	25	25
		Kotagala	Hedigalle	Thawana	13	13
		Namunukula	Pallegoda	Upper	10	10
			Frocesster	Govina	26	
Sub Total					99	48
02	Ratnapura	Balangoda	Balangoda	Maratenna	31	
		Balangoda	Balangoda	Detanagala	19	
		Kahawatta	Houpe	Yainna	15	
		Balangoda	Pettigala	Upper	48	
Sub Total					113	0
03	Badulla	PVT	Needwood	Needwood	11	11
		Namunukula	Gonakelle	Lower	48	48
		Namunukula	Canawarella	CVE	23	23
		Agarapatana	Pitratmale	Upper	20	20
47						
Sub Total					149	102
04	Kegalle	Kelanivalley	Dewalakantha	Dehiowita	06	6
			Panawatte	Pan 04	26	
			Kalupahana	Nirmale	9	
			Kalupahana	Waharaka	7	
			Kalupahana	Kalupahana	84	
		Kegalle	Atale	New Arandara	12	
Sub Total					144	06
05	Kandy	SLSPC	Goomera	Lebonan	19	19
		JEDB	Hope	Lower	25	25
		JEDB	Hope	Upper	06	06
		SLSPC	Nickoloya	Weragama	14	14
		SLSPC	Midland	Bambarakelle	07	07
		Pussallawa	Geragama	Gobaghika	15	
		Kahawatta	Galamuduna	Winedor Forest	11	
		Kahawatta	Kallebokka	Hoolankanda	23	
			Bowhill	Bowhill	16	
Craihead	Upper		15			
Sub Total					151	71

06	Hatton	Bogawantalawa	Kotiyagala	Lower	184	
		Maskeliya	Brunswick	Brunswick	25	
		Wattawala	Kenilworth	1 st	03	03
		Horana	Tillicoultry	Tillicoultry	10	10
			Bambarakelle	Bambarakelle	20	20
			Mahanilu	Mahagala	15	
		Kelanivalley	Ingestry	Portre	15	08
		Kotagala	Mayfield	Mayfield	16	16
			Chrystelers Farm	Chrystelers Farm	20	20
			Stonycliff	Rosita	23	
Sub Total					331	77
07	Nuwara eliya	Agarapatana	Hauteville	Fankerton	150	
		Udapussellawa	Courtldodge	Courtldodge	24	24
		Talawakelle	Dessford	Upper	16	16
				Lorne	15	15
				Lower	14	14
		Agarapatana	Torrington	Stair	12	12
		Udapussellawa	Concordia	Upper	02	02
		Elpitiya	Dunsinane	Akaramalai	23	
			Sheen	Lower Pundaluoya	18	18
		Elpitiya		Upper Pundaluoya	12	12
		Mathurata	Kabaragala	Lower	10	10
		Elpitiya	Medacombra	Top/Lower	23	
		Wattawala	Waltrim	Waltrim	10	10
		Kegalle	Luckyland	Luckyland	25	25
		Mathurata	Mahauva	2nd	15	15
		Kelanivalley	Glassaugh	Adnevan	15	15
Talawakelle	Somerset	Langdale	01	1		
Agalawatte	Weddemulla	Wewendon	58			
Sub Total					443	189
Grand Total					1430	493



8.2.2 Housing with the assistance of Indian Government

The project was commenced with the assistance of the Indian Government for the construction of 4000 housing units for the plantation community. The unit cost of a house in this project, is estimated as Rs.1 Mn, out of which Rs. 950,000.00 will be given by the Indian government while Rs.30,000.00 worth contribution obtain from relevant plantation companies and the balance Rs.20,000 to be contributed by the beneficiary of the house. The GOSL (Government of Sri Lanka) has to meet the cost of water supply, electricity, access roads and other infrastructural facilities needed for the housing scheme. Rs 75 Mn has been allocated under the budgetary provision of the Ministry for 2016, to commence the 1st phase of this project.

Phase 1

Hon. Minister and Indian High Commissioner have signed the 1st phase of the agreement of the project on 01.04.2016 for the construction of 1134 housing units. Accordingly, basic activities have been completed to build 1134 houses.

Phase 11

Priority has been given under the second phase for the houses affected by the land slides, fire or potential high risk land slide prone areas. Under this stage, it is scheduled to be constructed 2,866 houses. National Building & Research Organization (NBRO) and relevant Estate companies are in the process of identifying the suitable areas.

Signing the Agreement for Indian Housing Programme – 01.04.2016



First phase progress of the Indian Grant Assisted Housing Project

Plan-tation Area	Estate	Division	Housing Units	Progress
Nu-wara Eliya	Dunsin-nen	Middle	404	Land Preparation, Beneficiary Selection and Procurement activities are in progress
	Dayagama	1 st & 2 nd	150	Construction activities have been comenced
Badul-la	Ledger Watta	Ledger Watta	75	Land preparation is in progress
		Narangala	50	Land preparation is in progress
Kandy	Helboda	Middle	100	First Stage in progress
Hatton	Bogawana	Bogawana	100	Surveying activities are being implemented
		Bridwell	155	Foundation and Land Preparation activities are in progress
		Lynsted	100	Surveying activities are being implemented



Indian Grant Assisted Housing Project implemented by Regional Office, Kandy at Helboda Estate - Middle Division



Indian Grant Assisted Housing Project implemented by Regional Office, Hatton at Bogawana Estate - Bridwell Division



8.2.3 Construction of houses for landslide victims (2015 continuation projects)

Construction of houses for 308 worker families who were the victims or residents in landslides prone areas in the Uva, Sabaragamuwa and Central provinces, was commenced under the 100 day programme of the Government. The cost of a house is Rs. 1.2 Mn. & each house is in 07 perch land with 550 square feet floor area covering 2 bed rooms, kitchen, verandah and attached toilet.

Under this programme 288 houses were completed at the end of 2015 at a cost of Rs. 302 Mn, The remaining 20 houses were completed and handed over to the beneficiaries at the end of June 2016.



Housing Project implemented by NuwaraEliya Regional office, at Albian Estate, Aldlaw Wedamulla Division in Agarapatana Plantation Company
Beneficiaries - 10 Families, Estimated Cost - Rs. 6.5 Mn

8.2.4 Construction of houses under the New Life Housing programme. (2014 / 2015 Carry over Projects)

New Life Housing Program which commenced and not completed during 2012 - 2014 were recommenced. The cost per house was Rs. 515,000/=. Under this program 47% of the cost was rewarded as a grant and 53% given as a loan.

Accordingly, construction work of 336 houses which were not completed in the year 2015 has been completed in 2016. Balance 50 are nearing completion.

Ministry has allocated Rs.121 Mn. for this work and its financial Progress is Rs. 119 Mn. Further more, under the new life housing project targeting 328 beneficiary families 16 water Projects have been commenced in 2016 and allotted amount for this was Rs. 10Mn.



Housing Project implemented by Rathnapura Regional office, at Doloswala Estate, Kolombagama Division in Agalawatta Plantation Company
Beneficiaries - 30 Families, Estimated Cost - Rs. 36 Mn

Physical Progress of New Life Housing Programme (2015 Carry overs)

Physical Progress	Housing Units (2015 Carry overs)	Progress - Regional Level					
		Nuwara Eliya	Hatton	Kandy	Badulla	Rathnapura	Kegalle
Completed	336	125	44	40	20	50	57
Continuations	50	-	10	40	-	-	-
Total	386	125	54	80	20	50	57

Progress of Water Supply Projects implemented under the New Life Housing programme

Region	Number of Water Projects approved	Regional Plan-tation Company	Estate	Number of Ben-eficiary Families
Galle	03	Namunukula	Walpita	25
		Horona	Fosestor	16
		Namunukula	Cytrus	20
Badulla	01	hapugasthenna	Adawatta	20
Rathnapura	02	Balangoda	Meddakanda	10
		Kahawatta	Opatha	15
Kandy	03	Pussellawa	Steeleburg	40
		Uda Pussellawa	Dukvari	10
		SLSPC	Goomera	30
Kegalle	03	Kelaniveli	Kelani	20
		Malwatta veli	Moraelya	18
		Kegalle	Udapola	19
Nuwara Eliya	04	Agarapathana	Newportmore	30
		Kegalle	Gampaha	15
		Kegalle	Lucky Land	20
		Kelany velley	Nuwara eliya	20
Total	16			328

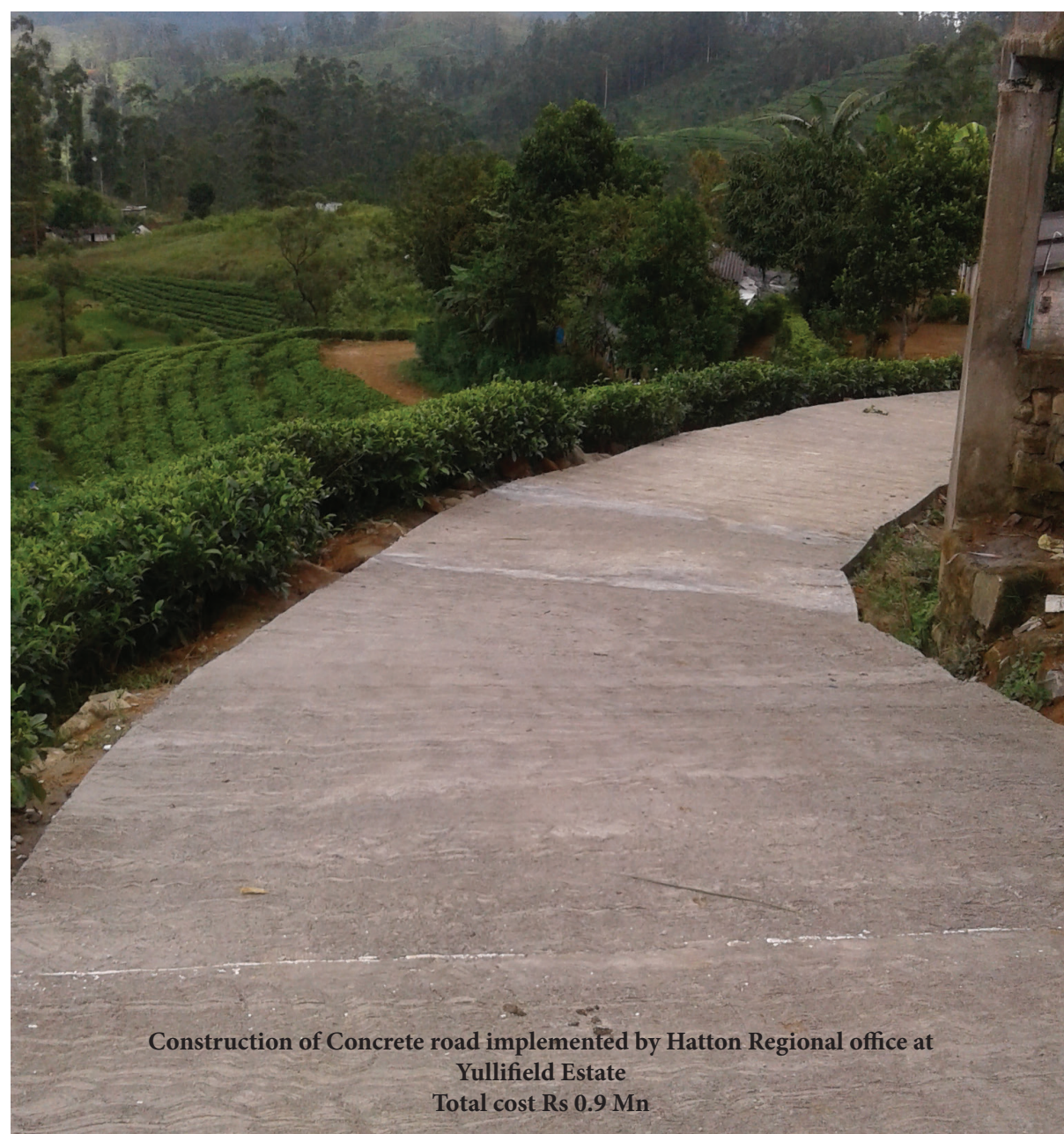
8.3 Lagging Areas Socio-Economic Development

Under this programme, development projects are being implemented, aiming the plantation community in deprived areas by providing drinking water & sanitation facilities, rehabilitation / construction of access roads, re-roofing line rooms and construction of child development centers etc. In addition, the programmes such as provision of temporary shelters & taking necessary interim measures for plantation community in emergency situations are also being carried out under this category.

Ministry has allocated Rs. 200 Million for the socio economic development of lagging areas in 2016. Out of this, Rs. 78 Million has been spent to complete the carry over projects, which have been approved in last quarter of 2015.

2015 Carry over Project and allocations

Type of the Project	Number of Project	Approved amount Rs. Mn.	Expenditure as at 31/12/2016 Rs. Mn.	Physical Progress%
Re- Roofing	700	12.00	11.99	100
Water Projects	19	6.65	6.65	
Development of Child Development Centers	21	5.10	5.11	
Development Projects such as Road, Playgrounds, religious places, Cultural Centers, Schools etc.	92	54.55	54.68	
Total		78.30	78.43	100



Construction of Concrete road implemented by Hatton Regional office at Yullifield Estate
Total cost Rs 0.9 Mn

8.3.1 New Programmes/ Projects commenced in 2016 and Progress.

8.3.1.1 Re-roofing of 905 dilapidated line rooms

The Ministry has taken steps to re-roof 905 dilapidated line rooms in all 7 plantation regions which come under the Plantation Human Development Trust (PHDT). Re-roofing is an interim measure since the construction of large number of new houses is costly and time consuming. By the end of December 2016, Ministry has provided Rs.60 Million to PHDT for this purpose.

In addition, Rs. 18 Mn. worth, 11,292 number of roofing sheets were distributed to build temporary shelters for the people who faced emergency situations, in Nuwara-Eliya, Hatton, Kegalle, Badulla, Rathnapura and Kandy plantation areas.



Re - Roofing Project Implemented by Kandy Regional Office at Rockwood Estate, Line Room No. 04 in JEDB Plantation Company

8.3.1.2 Providing safe drinking water facilities.

Although many water springs originate from the mountains where plantation settlements are located, plantation community has a limited access to safe drinking water. Since the water supplies are unprotected, plantation community is vulnerable to water borne diseases such as diarrhea. Thus, most of the water supply projects are implemented in selected areas aiming the vulnerable community. Nineteen incompleting water supply projects commenced in 2016 were able to complete by the end of 2016. The Ministry has already taken steps to commence 27 new water supply projects in 2016, at a cost of Rs 07 Mn. Out of that, 23 water project have been completed.

Implementation of Water Supply projects in lagging areas. (Physical Progress as at 31.12.2016)

Progress	Number of Water Projects	Progress - Regional Level						
		Nuwar-aeliya	Hatton	Kandy	Badulla	Rathna-pura	Kegalle	Galle
100% Completed	23	01	01	05	12	01	02	01
Construction Stage	04	-	-	-	01	02	01	-
Total	27	01	01	05	13	03	03	01



Water Supply Project Implemented by Galle Regional Office, at Pallegoda Estate, in Namunukula Plantation Company
Total Cost - Rs. 0.6 Mn.

8.3.1.3 Providing Sanitation facilities

According to the survey data, improved sanitation facilities are not available for more than 25% of the plantation community. To provide sanitation facilities for the people live in line rooms, the Ministry has approved 542 new latrines in 2016. Out of that 532 were completed and handed over to the Beneficiaries. The construction of these latrines has been entrusted to the Estate Worker Housing Cooperative Societies through Plantation Human Development Trust. Beneficiary contribution is secured through the excavation of toilet pits. Estimated cost per unit is Rs 50,000.00 and Rs 7 million has been incurred for the project by the end of 2016.

Regional level progress of the construction of Latrines in year 2016

Progress	Number of Latrines	Progress - Regional Level					
		Nuwar-aeliya	Kandy	Badulla	Rathna-pura	Kegalle	Galle
100% Completed	532	10	157	145	120	55	45
Construction Stage	10	-	-	-	-	-	10
Total	542	10	157	145	120	55	55



Latrine project implemented by Kegalle Regional office, at Adurapola Estate, Adurapola Division in Alptiya Plantation Company
No of Units -10, Project Cost - Rs. 0.5 Mn

8.3.1.4 Construction / Renovation of Child Development Centers

Child Developments Centers provide facilities to look after the infants below two years of age and ensure school rediness for the 3 to 5 years old children. Level of the service provides by these Centres in plantation areas, is inadequate due to less space in class rooms, shortage of furniture & equipment and lack of maintenance. Hence, these Centres have been given low grading in standard classification. The Ministry has spent Rs 5 Mn at the end of December in 2016, to provide materials for the selected Child Development Centres and pre- schools to develop them.



CDC Development Project implemented by Kandy Regional Office, at Rochchild Estate, Glanledge Division in Pussalwa Plantation Company
Project Cost - Rs. 1.6 Mn

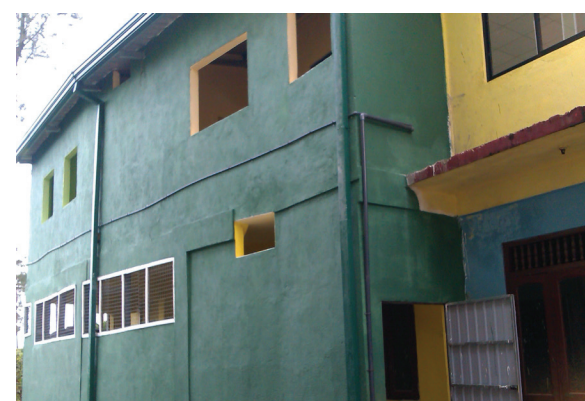
8.3.1.5 Development of Common Amenities / Access Roads

Aim of this programme is to uplift the living condition of the plantation community by developing infrastructure facilities required to improve accessibility and welfare activities. Main development activities conducted under this programme are the construction and rehabilitation of access roads, drainage systems, retaining walls, foot paths, development of playgrounds, sports facilities & other facilities which need to uplift the social life of the people such as distribution of tents and furniture to welfare centres, and renovation and rehabilitation of cultural centres and religious places.

New projects implemented in 2016 to develop lagging areas

project	Implementing Agencies		Total Number of Projects / Units	Works completed as at 31.12. 2016	Approved amount Rs. Mn.	Expenditure as at 31. 12.2016 Rs. Mn.
	P.H.D.T	D.S. O/P/S				
Water Supply	✓	✓	27	23	6.70	6.72
Construction of Toilets	✓		542	532	25.13	23.86
Road Development Projects	✓		905	905	60.0	60.04
Playgrounds Development of Religious places Re-roofing and Others (including school, pre - school, & CDCs) we	✓	✓	108	83	55	54.8
Total					146.83	145.42

Special projects implemented in 2016 to develop lagging areas





8.4 Livelihood Development Programme

The areas which have been given special attention in NPA, to be improved, are the health & nutrition, skill development & vocational training and community empowerment (women, youth). In order to improve these areas, a number of programmes such as awareness, technology and training, provision of equipment and facilities including social empowerment are being carried out by this Ministry.

In line with the NPA, other relevant Ministries also implement special projects identified under each and every sector to uplift the plantation community in coordinating with this Ministry. Some programs are conducted by the PHDT.

8.4.1 Community Awareness

The Ministry has spent Rs. 2 Mn. by the end of December 2016, for the implementation of the programmes such as improvement of health and nutrition, drug prevention, environmental protection and prevention of Kidney disease which had been declared by His Excellency the President as national programmes.

These programmes are implemented through Divisional Secretariats (DS) in plantation areas coordinating with the Plantation Community Communication Facilitators (PCCF) appointed by the Ministry, attached to the DS offices. Some Programmes are conducted by the PHDT.



Conducting Community Awareness Programmes

8.4.2 Home Gardening and Food Security

With the objective of enhancing the nutritional status of the plantation community, they were promoted to engage in home gardening surrounding their newly constructed houses, minimizing the use of chemicals while conserving

the environment. Under this programme, they were equipped with necessary knowledge & provided planting materials, seeds and equipment. These programs are implemented based on the requirement of the community through Regional Plantation Companies. Ministry has spent Rs. 4 Million by 31st December 2016 for this purpose.

Provision of facilities under the programme of Home Gardening and Food Security - at regional level

No of Benefited Families	PHDT Region					
	Hatton	Rathnapura	Galle	Kegalle	Badulle	Kandy
1176	136	132	207	125	76	500



8.4.3 Self-Employment Opportunities

With the objective of improving the livelihood of the Plantation Community, the Revolving Fund which was inactive for longer period of time, was re- activated by the Ministry & came to an agreement with the Bank of Ceylon to provide loan facilities for the plantation community to commence self – employments.

As an initial step, 16 numbers of beneficiaries were selected from NuwaraEliya and Hatton regions & Rs. 100,000.00 per each was given on 04.08.2016 as a loan to commence self employments such as poultry, dress making, computer repairs and farming purposes etc.

Additional loan facilities will be given by the Bank of Ceylon to improve their self employments while providing training facilities through the relevant institutions. Selection of second batch of beneficiaries is in progress for the expansion of this programme.

8.4.4 Skills Development and Vocational Training

Vocational Training programme is implemented through the Thondaman Vocational Training Centre and Prajashakthi project which come under the purview of this Ministry, with the objective of providing necessary guidance and training for school levers and unskilled labourers in plantation areas, to direct them to find out suitable employments for improving their livelihood.

The Ministry has allocated Rs 103 Mn. in year 2016, for the improvement of the technical facilities, human resources and the quality of training courses of the Thondaman Vocational Training Centre (TVTC). Though the TVTC was listed under the Ministry in September 2015, due to the financial constrains faced & changes of Ministries, the training Courses conducted by this institution have been suspended in 2015 and utilized funds to pay salaries of the employees.

For this purpose, Rs 76 Mn. has been spent up to September 2016. All the training courses have re-commenced in 2016 and 135 students follow training courses at present.



Ceremonial Initiation of New Training Programms at TVTC - Hatton -20.03.2016



Certificates Awarding Ceremony at TVTC on 29.04.2016



Traning Programme at Thondaman Vocational Traning Centre at Hatton

09. Noteworthy Achievements of the Ministry in 2016

- 9.1 Launching Five Year National Plan of Action (2016-2020) for socio economic development of the plantation community.
- 9.2 Functioning & upgrading following institutions under the direct supervision of the Ministry:- Thondaman Vocational Training Centre at Pool Bank Hatton, Sports Complex at Noorwood, Cultural Centre at Ramboda, and Prajashakti Projects were functioning under the Saumyamoorthi Thondaman Foundation (STMF). Salaries of the employees of the STMF and its institutions were paid by the Treasury due to the financial constrains faced by the Foundation. At present these institutions are functioning under the direct supervision of the Ministry.
- 9.3 Signing the agreement with the Government of India to construct 4000 houses for plantation workers, under the Indian assistance
- 9.4 Re-activating the Revolving Fund for livelihood development.
- 9.5 Obtaining the approval of the Cabinet of Ministers to establish a new authority to implement development programs for the plantation community.
- 9.6 Supervision of Early Childhood Development and Water Supply and Sanitation Improvement projects implemented under the World Bank assistance.



Ministry Staff



10. Institutions come under the purview of the Ministry

10.1 Plantation Human Development Trust

10.1.1 Background

The Plantation Human Development Trust (PHDT) is a company, was first established on 18th September 1992 as the Plantation Housing & Social Welfare Trust (PHSWT) and incorporated under the Companies Act No 17th of 1982 to improve the livelihood of the plantation community. In year 2002, this organization was re-named as the Plantation Human Development Trust (PHDT) and currently this Trust has been re-registered under the Companies Act No 07 of 2007.

In order to achieve the above, the PHDT implements the following activities:

- Provide individual houses with ownership to the suitable people, instead of line rooms.
- Repair and re-roof existing line rooms
- Improve water supply and sanitation facilities
- Establish Child Development Centers and introduce qualified Child Development Officers (CDOs)
- Implement community development activities (roads, buildings and religious centres etc.)
- Provide health facilities and social development activities
- Extend Marketing development initiatives

10.1.2 Plantation Human Development Trust – Organizational Structure and Related Institutions

10.1.2.1 Organizational Structure

Plantation Human Development Trust (PHDT) is functioning under the purview of the Ministry of Hill Country New Villages, Infrastructure and Community Development. It is a Tripartite Organization consisting of the Government of Sri Lanka, Regional Plantation Companies and Plantation Trade Unions and

facilitates to implement social development programmes to enhance the quality of life of the one million plantation community in the estates managed by the Regional Plantation Companies.

The PHDT is involved in implementing infrastructure and social development projects in collaboration with the relevant line Ministries, Trade Unions, Regional Plantation Companies, International and Local Non-Governmental Organizations and private sector organizations which contribute to improve living condition of the plantation community.

The PHDT functions under a Board of Directors and a Chairman appointed by the Hon. Minister which comprises representatives of the Government of Sri Lanka, Regional Plantation Companies and Trade Unions. The Main Office is strengthened by seven Regional Offices located in the Plantation areas of Galle, Rathnapura, Badulla, Kegalle, Kandy, Hatton and Nuwara Eliya. Regional Director is the head of the Regional Office and supported by financial, technical and management staff.

Regional Structure of the Plantation Human Development Trust



10.1.2.2 Related Institutions – Estate Worker Housing Cooperative Societies (EWHCS)

Estate Worker Housing Cooperative Societies (EWHCSs) were established in collaboration with the Department of Cooperative Development in 1993. Those societies were formed initially for the implementation of housing projects. Currently, there are 418 Societies operate in 435 estates under RPCs and State Entities.

These societies generate their own funds through their own banks named as “Vathusevaka Nivasa Samupakara Samithiya (Vanisa) bank” and provide loans.

In addition to providing loans, this Cooperative Societies assist to create employment opportunities. Eg: It facilitates the plantation community towards service provider with easy access to commence enterprises such as retail shops, welfare shops, communication centres, saloons etc in estate areas.

The PHDT has also entered into partnerships with multinational and other leading private sector organizations to provide easy access to products and services to the estate residents with the appointment of EWHCS as sub dealers, to improve their quality of life and also their health, nutrition, sanitation and hygiene etc.

10.1.3 Other Projects implemented by the Plantation Human Development Trust

10.1.3.1 Early Childhood Development Programme

Under the World Bank assistance, the Ministry has commenced a Five-year project on Early Childhood Development in collaboration with the Ministry of Women and Child Affairs. Its total investment is US \$ 10 Million. Under this project, it is expected to improve qualitative as well as quantitative aspects of child development activities of 3-5 years children in the plantation areas. The project will be ended in 2020.

Under this project, the number of new CDCs to be constructed is 140 with building, playground & equipment, CDCs to be upgraded is 175, Construction of new play areas with equipment is 175 and renovation of existing play areas with equipment is 210 including training for pre- school teachers and assistant teachers and awareness programmes for parents.

In 2016, initial steps have been taken to construct 28 new Child Development Centres and upgrade 35 existing Centres including construction of 42 play areas in seven plantation regions. In addition, 206 number of Child Development Officers were trained under this project. For the first time, a census is also been carried out in collaboration with the Department of Census and Statics to obtain information on pre-school teachers and Child Development Centres.

10.1.3.2 Water Supply and Sanitation Improvement Project

With the World Bank assistance, steps have been taken by the Ministry through the PHDT, to commence 130 number of water supply projects targeting 15,800 households and to construct latrines targeting 7,300 households in selected areas of Nuwara Eliya and Hatton. The total estimated cost of the project is US \$ 14 million and will be ended in 2020.

During the 1st phase of the project, commenced in 2016, 35 number of water supply projects are being implemented benefitting 9,740 households in Nuwara Eliya, Hatton and Kandy regions. At present, the feasibility studies have already been completed while surveying is in progress. Initial activities were commenced for the construction of latrines.



Discussion with World Bank mission on water supply project



10.1.3.3 Community Health and Welfare Programme

To improve the living condition of the plantation community, health and welfare programmes have been implemented by the PHDT during the last several decades. In line with its vision and Mission, the PHDT acts as a coordinator as well as a facilitator to improve the health, physical, mental conditions and spiritual development of the plantation community, achieving a significant improvement of health and nutritional status of the plantation community.



Health and Nutritional Status of the Plantation Community 2013 - 2015

Indicator	2013	2014	2015
Population	977,781	983,306	998,484
Infant Mortality	150	133	70
Maternal Mortality	15	18	4
Low Birth Weight	2,792	2,103	2,083
Live Birth	13,319	12,312	12,028
Still Birth	153	133	107
Teenage Pregnancy	969	640	614

Source: PHDT Health Return - 2016



10.2 Institutions come under the Soumyamoorthi Thondaman Memorial Foundation

Background

Thondaman Vocational Training Centre in Pool Bank - Hatton, Sports Complex in Norwood, Cultural Centre in Ramboda and Prajasakthi Centers which were come under the Saumyamoorthi Thondaman Foundation, have been vested under the direct supervision of this Ministry with the approval of the Cabinet of Ministers effecting from 20.07.2016.

10.2.1 Thondaman Vocational Training Center (TVTC) in Pool Bank- Hatton

The management of the TVTC was handed over by the Vocational Training Authority to the Saumyamoorthi Thondaman Memorial Foundation in March 2007. The High Commission of India in Sri Lanka arranged seven (07) expert instructors from India to conduct training programmes at this centre at no cost to the Foundation. Now the number of instructors has reduced to four (04). They are assisted by local instructors for certain courses. Due to the financial constrains faced during last year, the Thondaman Foundation was faced many difficulties in conducting courses in regular basis. It was recovered and recommenced the courses in 2016, after receiving funds from the Ministry. Accordingly, steps have been taken to recommence the courses on 10th of March 2016 with the registration of 252 numbers of students so far, for various courses. Four months (March - June) period of training have been completed by 59 number of students and 44 out of them were received on the job training.

After two years, 457 students who completed their training in 2013 & 2014 were awarded certificates on 29 April 2016.

The TVTC is involved in conducting special classes for students to provide additional knowledge. Arrangements have been made by this institution to conduct Tamil medium classes for students who follow Engineering Technology which is a new subject introduced in G.C.E Advance level (AL). Students who come from various places i.e Norwood, Kotagala, Badulla, Matale, and Pussellwa attend these classes and get benefitted. A student at GCE AL in Norwood Tamil Maha Vidyalaya who attended the special class in this institution had obtained the first place in the District, can be stated as a special event. Many students in vicinity are also directed to this institution to improve their knowledge on science and technology.

Number of students registered for various courses at Pool Bank TVTC, during 2016

No.	Course	Registration									
		March - December 2016			March - June 2016			July - December 2016			
		Male	Female	Total	Male	Female	Total	Male	Female	Total	
1	Motor Mechanic	12	-	12	-	-	-	-	-	-	
2	Electrical Mechanic	14	-	14	-	-	-	-	-	-	
3	Technician	13	-	13	-	-	-	-	-	-	
4	TV/Radio Repairs	6	-	6	-	-	-	-	-	-	
5	Aluminium Fabricating	-	-	-	13	0	13	10	0	10	
6	Dress Making	-	-	-	0	16	16	0	16	16	
7	Domestic Electrical Mechanic	-	-	-	5	5	10	12	2	14	
8	Hotel Management	-	-	-	10	2	12	17	2	19	
9	Information Communication Technology	-	-	-	2	17	19	7	11	18	
10	Motor Cycle Mechanic	-	-	-	13	-	13	22	0	22	
11	Welding	-	-	-	1	-	13	6	0	6	
12	Carpentry	-	-	-	6	-	6	-	-	-	
	Total	45	-	45	62	40	102	74	31	105	
					252						

Other Community based activities implemented through Praja Shakthi Centers in 2016

- Awareness programme on National Plan of Action (30 activities) in Hatton/ Nuwara eliya , Badulla, Kandy, Galle and Ratnapura region .
- International Youth Day.
- New Year celebration with Centre students. (April)
- Skill Development programme for school Children.
- Workshop on importance of “Yoga”.
- Hygiene awareness programme conducted with the coordination with estate medical officers.
- Primary Education Programmes.
- Women’s Day celebration.
- Workshop on self-employment (Hand bag making).
- International Mother’s day celebration.
- Awareness programme on infectious diseases (Dengue, Hepatitis).
- Awareness programme on Nutrition and child care.
- Children’s day celebration. (October)

10.2.2 Prajasakthi (E-Kiosk) Centres

This project aims to achieve comprehensive, complete and overall socio economic development of the underprivileged rural community through extensive application and use of Information Communication Technology. At present, there are 44 Prajasakthi Centers in operation. The first Centre was established at Wanarajah estate in 2006. Accordingly, this project integrates the educational, social and cultural activities of the plantation community facilitating the use of technology as a catalyst to transform the community. The number of students registered in 2016 at 44 Prajasakthi centers are 3004.



10.2.3 Thondamaan Cultural Centre - Ramboda

This center was established with the objective of improving cultural aspirations and practices of the underprivileged community. Classes are being conducted in Carnatic Music, Veena, Mirudangam and Violin under the guidance of a full time teacher. This programme has not been able to continue due to the financial constrains faced by the Thondaman Foundation. As a result, even single progremme has not been able to commence in 2016

10.2.4 Thondaman Sports Complex - Norwood

The sports complex was handed over to the Foundation in 2005 with its formation by the Parliament Act No. 19 Of 2005. The play ground has been developed and constructed by the Football Federation at a cost of Rs. 25 million in 2011. The Gymnasium and indoor Badminton Court were declared opened in 2012. Due to the financial constrains faced by the Thondaman Foundation, any new major development work in the Complex is not done in 2016. However, Government institutions and Schools in the vicinity utilized this complex during the year 2016, for their sports activities.



Thondaman Sports Complex - Norwood



வැවிலே அண்டை ரவெ இலர்வான சனகிக கிரிலேதிலா டெக வன ப்ருவான அண்டைகி. இசே
பூவட விசேசசென் டர்வாவ, சௌவா நா சேசசன், பூர்வ குவாவிச டகவரசன்,
அடிப்பானசடு ப்ருவெவெ, சௌவாரசக்தெ பாதிச ச்ரெ, சனிபாரசக்தாவ சன காந்நா
நகரென்வெெ யநாடி கர்சு சகநென்வெென் நானக நா குவெெ அண்டைநி டர்வக நா
சசடத கக வ்ரவெெ அண்டை வெசன ச்நவாவ ச்வானி சனககவெெவெென் வவான சிவெெ ச்ந
கௌவிடியவெெ லெச ச்ரெகெ. வெெ குவெெ நிராகரசன் கர் இவெென்சே ச்வன வெெவெெ
ந்ருவெெ அர்வெென் ரசெ விசென் வெெ அவாந்யாண்டை ச்ருவெெ கர்ந லெெ.

பெருந்தோட்டத்துறை நாட்டின் அபிவிருத்தியை உறுதிப்படுத்துவதில் பங்களிப்புச்
செய்யும் பிரதானமான ஒரு துறையாகும். எனினும், குறிப்பாக வறுமைநிலை,
ஆரோக்கியமும் போசாக்கும், முன்சிறுவர் பராய பாதுகாப்பு, கல்விக்கான வாய்ப்பு,
பாதுகாப்பான குடிநீர், சுகாதாரம், மகளிர் வலுவூட்டல் முதலிய விடயங்கள்
தொடர்பில் நகர மற்றும் கிராமிய துறைகளின் குறிகாட்டிகளுடன் ஒப்பிடுமிடத்து
பெருந்தோட்டத்துறை வாழ் மக்கள் அவ்வாறான வசதிகளினால் பெரிதும்
பலவீனமடைந்த மக்களாக கருதப்படுகின்றனர். ஆகவே இப்பிரச்சினைகளை
நிவர்த்தி செய்து அவர்களின் வாழ்நிலையை முன்னேற்றும் நோக்கிலேயே
அரசாங்கத்தினால் இவ்வமைச்சு தாபிக்கப்பட்டது.

The plantation sector is one of the main sectors contributing for the assurance of
country’s development. However, the plantation community is the most deprived
community in terms of social development when compared with urban and rural
sector indicators particularly on poverty, health and nutrition, early childhood
care, access to education, safe drinking water, sanitation and women
empowerment. In addressing the above issues, this Ministry was set up by the
Government focusing on improving their living standards.



கடர்வ னவி குதெவ, டிவன குவககதெ நா ச்ருச இலர்வான அவாந்யாண்டை
மலைநாட்டு புதிய கிராமங்கள், உட்கட்டமைப்பு மற்றும் சமூக அபிவிருத்தி அமைச்சு
Ministry of Hill Country New Villages, Infrastructure and Community Development